

Belmont Tower

APARTMENT AMENITIES & BUILDING FEATURES	INCLUDED SERVICES	ADDITIONAL SERVICES
<p>Choice of Four Apartment Floorplans</p> <p>All Kitchen Appliances, including Mini-Refrigerator & Microwave</p> <p>Individually Controlled Heating & Air-Conditioning</p> <p>Spacious Main Dining & Life Enrichment Rooms</p> <p>Private Dining Room</p> <p>Library and Computer Room with Internet Access</p> <p>Laundry Facilities on each Floor</p> <p>Outdoor Gazebo & Perennial Garden</p>	<p>Assistance with Personal Care, including: Bathing, Dressing, Toileting, Grooming</p> <p>Medication Management</p> <p>24-hour Staffing & Emergency Response System</p> <p>Three Homemade Meals Served Daily</p> <p>All Utilities including Basic Cable Television and Telephone</p> <p>Wireless Internet Service</p> <p>Maintenance & Groundskeeping Services</p> <p>Weekly Housekeeping & Personal Laundry</p> <p>Sheets & Towels Provided & Laundered</p> <p>Enriching Social Programs, Activities, & Outings</p> <p>Chaplain Services</p>	<p>On-Site Therapy Services</p> <p>Scheduled Transportation for Medical Appointments</p> <p>Beauty/Barber Salon</p> <p>One-on-One Care Companions</p> <p>Priority Status for Admission to Another Building on Campus</p> <p>Guest Meals for Visitors</p>



2000 Center Street • Ashland, Ohio 44805 • 419.289.1585 • www.brethrencarevillage.org



Belmont Tower

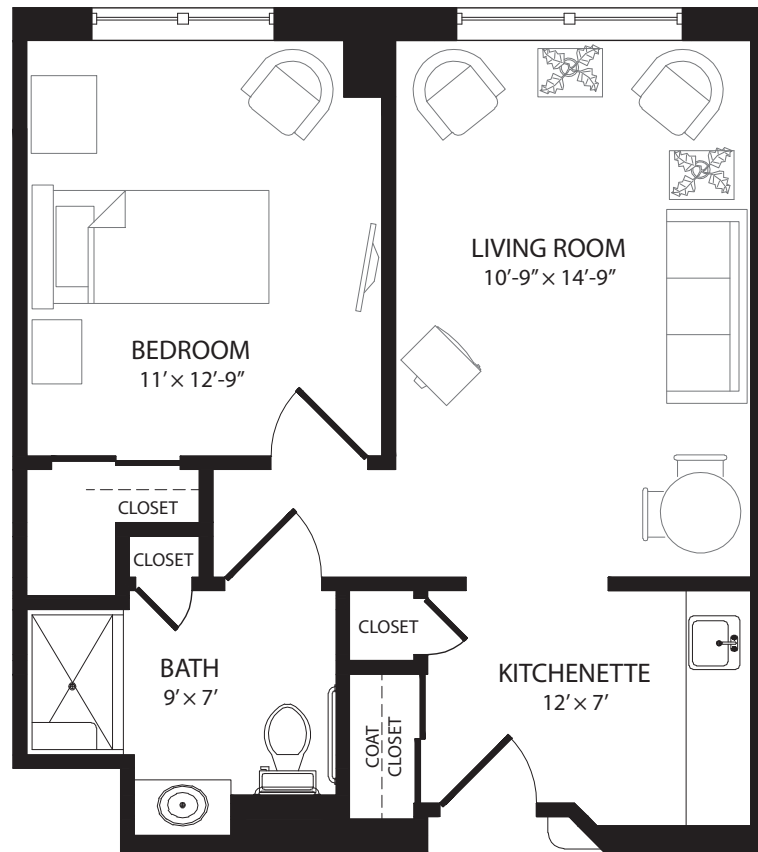


Brethren Care

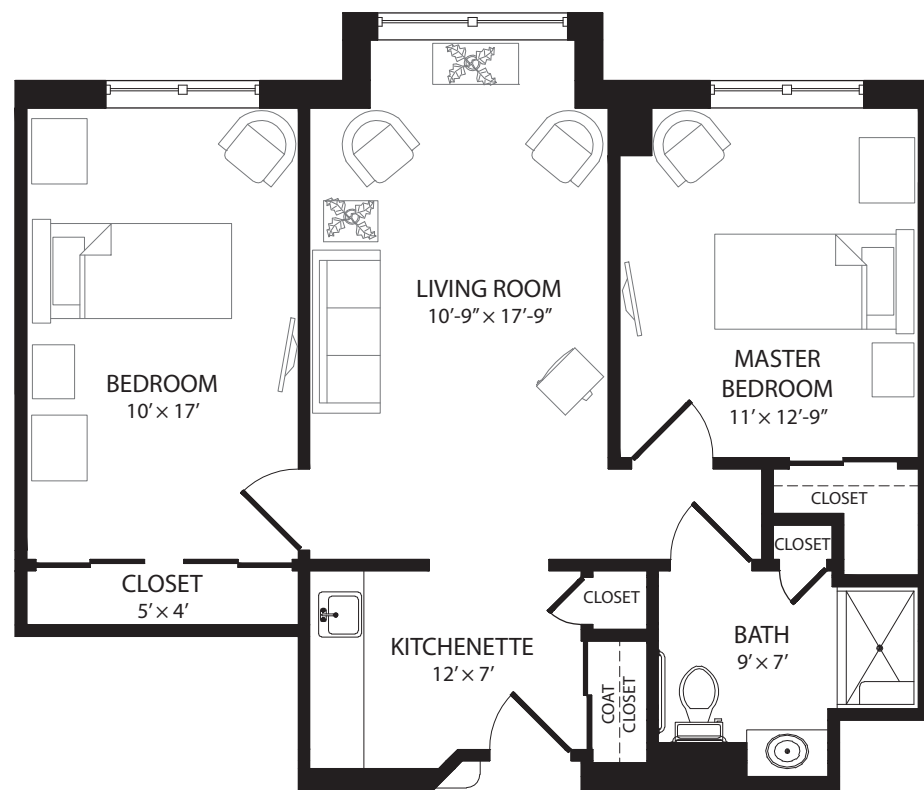
VILLAGE

EST. 1972

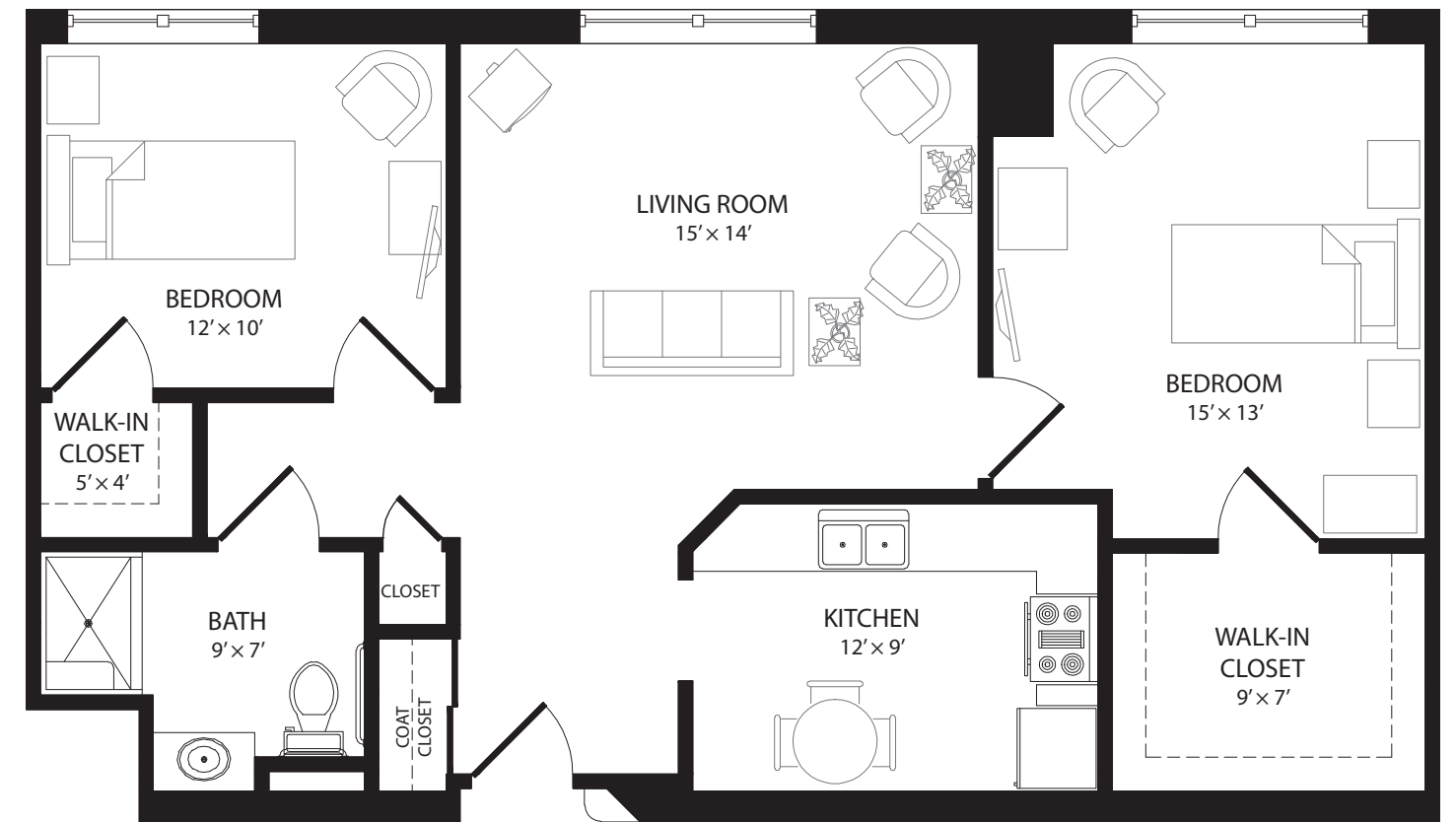
A Community Of Caring



BELMONT TOWER
500 SF



BELMONT TOWER
650 SF



BELMONT TOWER 900 SF